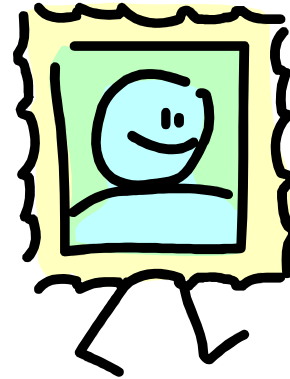


Personality quiz: Timid or charming?



1. What do you prefer?
2. How do you walk...?
3. When you talk to people, do you...?
4. How do you like to sit down?
5. If something is funny, do you have...?
6. When you go to a party, do you...?
7. What is your favourite colour?
8. How do you like to sleep?
9. What do you often dream of?

- a. That you're falling, swimming or flying. **A**
- b. That you're looking for something.
- c. Your dreams are always pleasant.
- d. You never remember your dreams.

- a. Morning **B**
- b. Afternoon
- c. Night

- a. On your back. **C**
- b. On your belly.
- c. On your side.
- d. With your head under the covers.

- a. Red or orange
- b. Black
- c. Yellow or light blue
- d. Green
- e. Purple or dark blue **D**

- a. Cross your arms
- b. Touch the person you are talking to
- c. Touch your ear, hair or nose **E**

- a. Make a dramatic entrance so everyone sees you **F**
- b. Enter with discretion and look for someone you know
- c. Enter very quietly and talk to nobody

- a. A big, strong laugh
- b. A quiet laugh
- c. Just a smile **G**

- a. With your legs crossed
- b. With your legs straight
- c. With one leg on your chair **H**

- a. Fast, with long steps
- b. Fast, with short steps
- c. Head up
- d. Head down
- e. Very slowly **I**

1. Match the questions with the possible answers in the following grid with A, B, C,D... (you can highlight the questions and the answers with the same colour)

1	2	3	4	5	6	7	8	9

2. Now, it's YOUR turn to answer! (with a, b, c, d or e)

1	2	3	4	5	6	7	8	9

3. Add up your points and discover what the results say about you!

1. a2 b4 c6
2. a6 b4 c7 d2 e1
3. a2 b6 c4
4. a6 b2 c4
5. a6 b4 c2
6. a6 b4 c2
7. a6 b7 c5 d4 e3
8. a7 b6 c4 d1
9. a5 b3 c6 d1



More than 54 points

You are a natural leader. People admire you.

35 to 54 points

You are charming, amusing, kind and interesting. You love adventure and people like to be with you.

15 to 34 points

You are reasonable, careful, practical and modest. You make friends slowly, but you are very loyal.

Under 15 points

You are very timid and don't like to make decisions. Only your friends know your good qualities.

