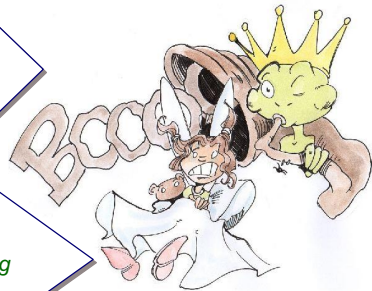


Expressions associées :

- now
- at the moment
- this morning
- this afternoon
- today
- tonight
- look ! ...
- listen ! ...

The frog is playing music !

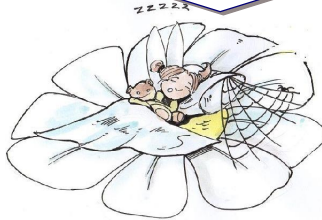
The fairy isn't sleeping now...



Quelle forme ?
- affirmative
- interrogative
- négative

Quelle personne ?
- I
- he, she, it
- we, you, they

Is the fairy dreaming ?



action en train de se dérouler

projet futur (choix personnel)

action continue

utilisation

English is magical with Agnès Pihuit my-teacher.fr

verbe finissant en "-y"
= "ing" ajouté au "y"
ex : carry devient carrying

verbe finissant en consonne + "-e"
= suppression du "-e"
ex : dance devient dancing

verbe court finissant en consonne+voyelle+consonne
= doublement de consonne finale
ex : run devient running

Agnès Pihuit
my-teacher.fr



Illustrated by Mickaël Huilliers

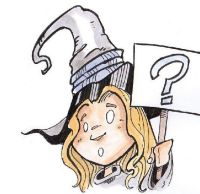
Présent continu

be +ing



forme affirmative

I	am	verb+ing
he she it	is	verb+ing
we you they	are	verb+ing



forme interrogative

Am	I	verb+ing ?
Is	he she it	verb+ing ?
Are	we you they	verb+ing ?



forme négative

I	am not	verb+ing
he she it	is not I'm not... isn't...	verb+ing
we you they	are not aren't...	verb+ing